

## Public Notice

The City of Easton, in cooperation with the Pennsylvania Department of Transportation (PennDOT) Engineering District 5-0, will be conducting repairs to the Glendon Hill Road Bridge.

This project involves structural repairs and complete painting of Glendon Hill Road Bridge, a three span thru truss over the Lehigh River in Northampton County. The structure carries Glendon Hill Road and the D&L trail across the Lehigh River to the Hugh Moore Park. This bridge provides the only public vehicular access to the Hugh Moore Park Island. The purpose of the project is to bring the bridge back to a state of good repair and to maintain the existing transportation infrastructure.

Construction is anticipated to last one construction season, beginning in **early June 2026 and ending in late September 2026**. The bridge will be closed to vehicular and pedestrians traffic during construction. Access across Glendon Hill Road Bridge to Hugh Moore Park and its amenities will be maintained for emergency vehicles during construction. Pedestrians and cyclist who wish to access the D&L trail can do so at the Easton & Forks of the Delaware trailhead on mile marker 59 (Delaware Canal Park).

Hugh Moore Park, Lehigh Canal: Easton Section, Delaware & Lehigh (D&L) National Heritage Corridor Trail, and Lehigh River Water Trail are all located within the project area and are open to the public for recreation such as hiking, biking, and boating. **No easements or right-of-way acquisitions are required to complete the bridge work, however, access to these properties will be impacted during construction.** These resources will continue to function for their designated purposes. While the project will not require land acquisition nor will it adversely affect the activities and attributes of the park and trail, access to the park and trail will be limited during the entire construction phase. Only emergency vehicular access will be permitted across the bridge during construction. The D&L trail utilizes the Glendon Hill Road Bridge, and the trail will be closed at the bridge. However, trail access for pedestrians and bikers into the park will remain open at the northern access point (**see Public Notice Map**).

For more information contact:

**David Hopkins**

Director of Public Services

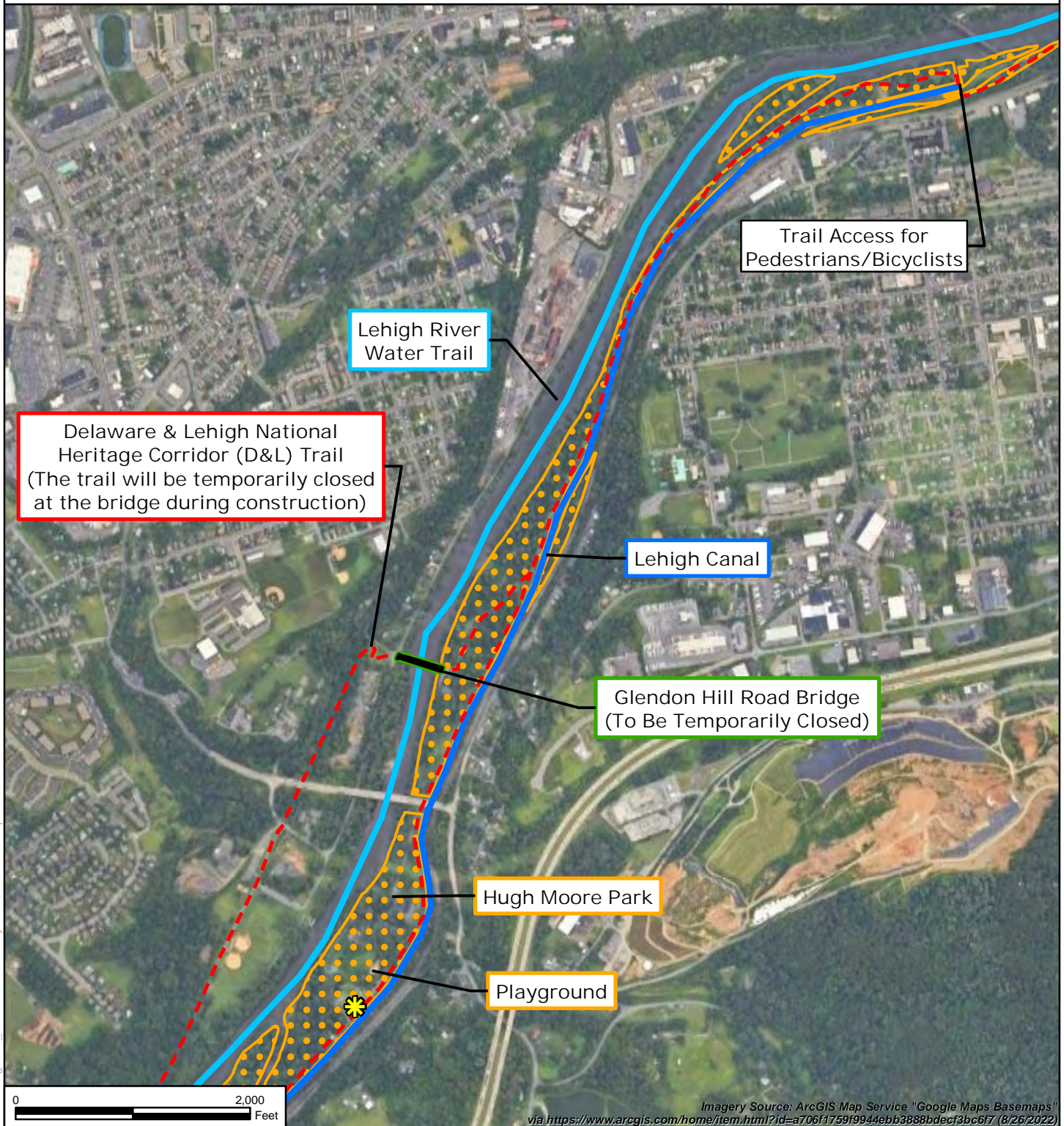
City of Easton | 123 S 3<sup>rd</sup> St | Easton, PA 18042

Phone: 610-250-6683

E-mail: [DHopkins@easton-pa.gov](mailto:DHopkins@easton-pa.gov)

## Public Notice Map

Hugh Moore Park Bridge Painting and Repairs (Bridge Closure / Trail Access)  
City of Easton and West Easton Borough, Northampton County, Pennsylvania



Hugh Moore Park

National Canal Museum

NRHP Eligible

Lehigh River Water Trail

Lehigh Canal

Delaware & Lehigh National Heritage Corridor (D&L) Trail